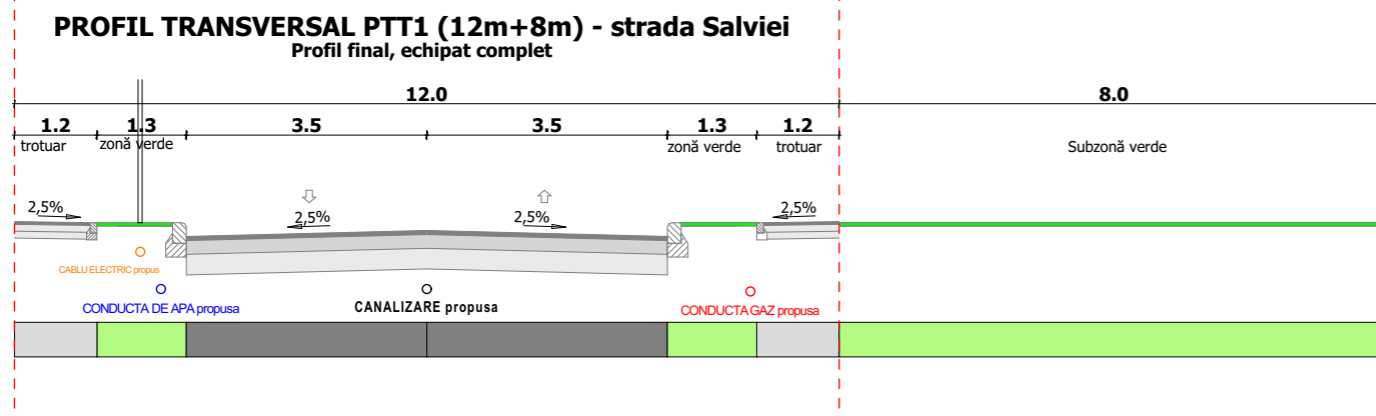
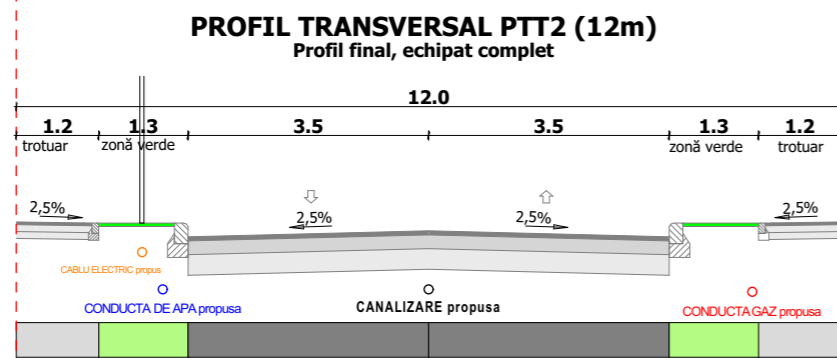


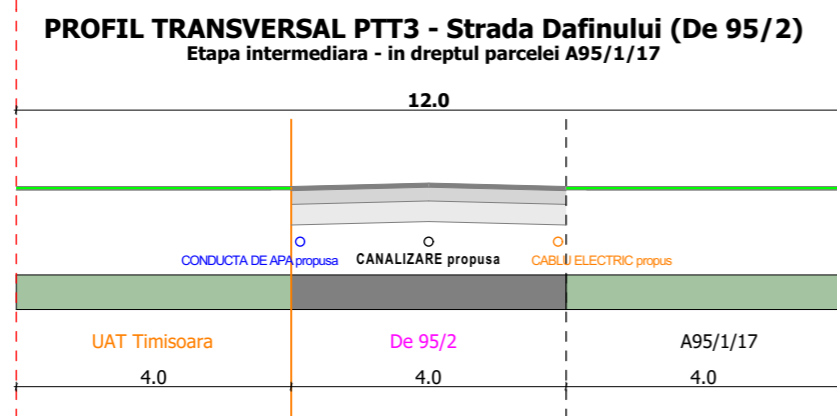
PROFIL PTT1 - 12+8 metri (strada Salviei)



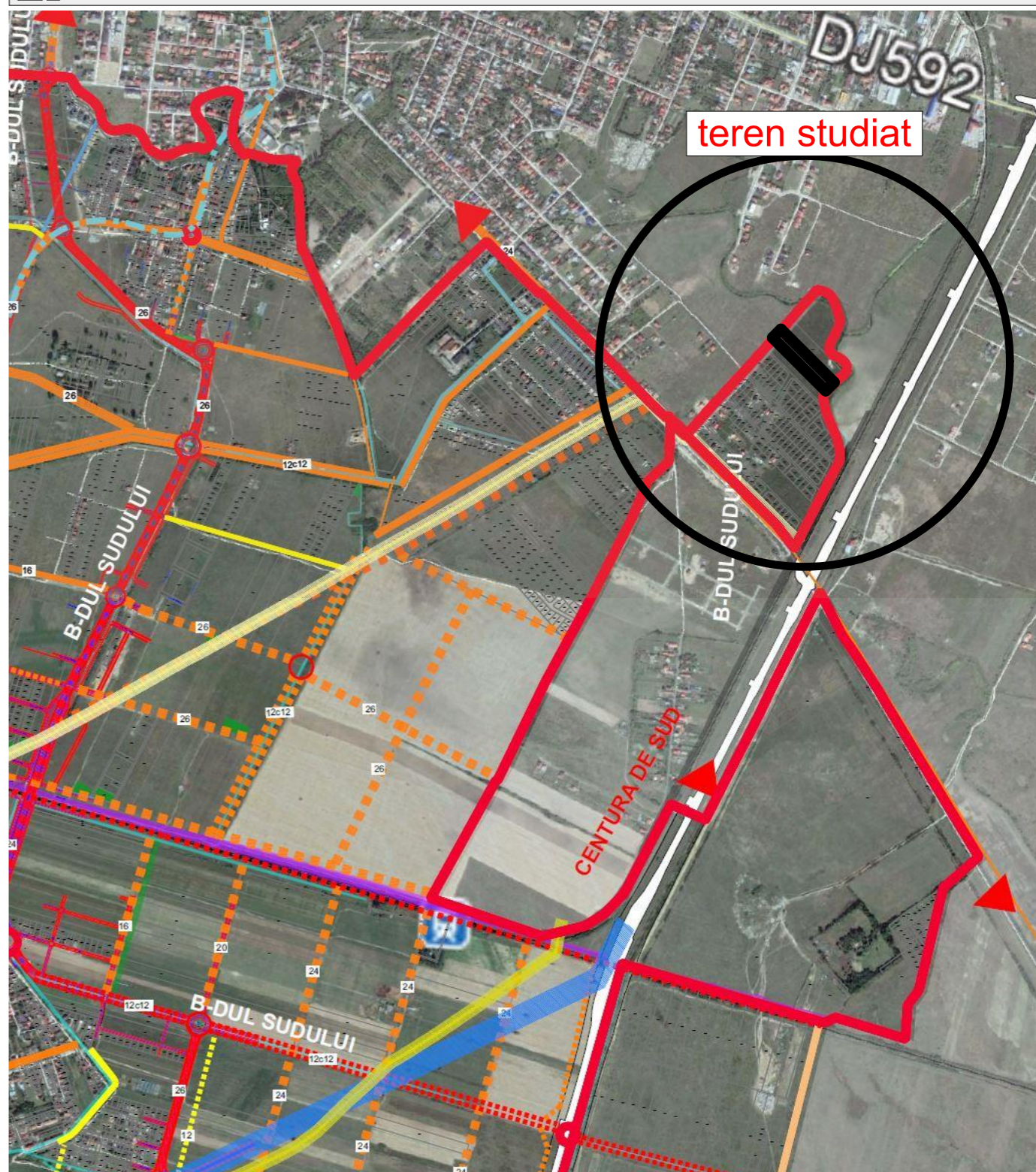
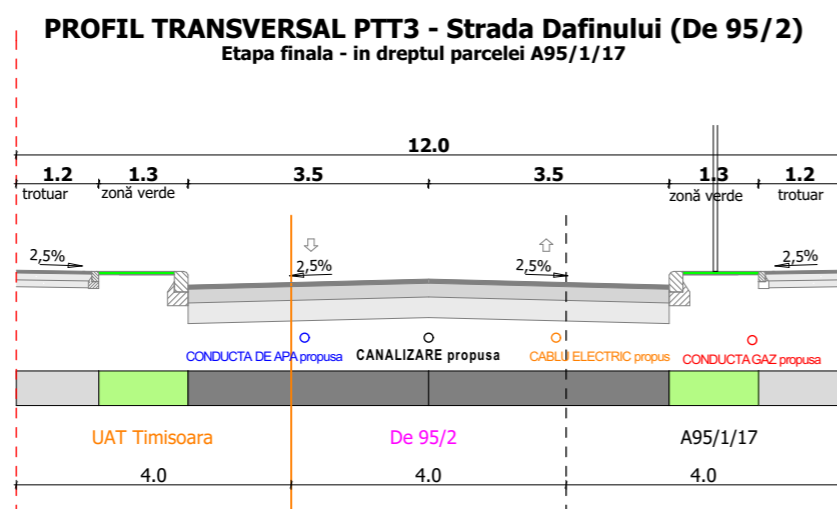
PROFIL PTT2 - 12 metri



PROFIL PTT3 - 12 metri (strada Dafinului - etapa intermediara)



PROFIL PTT3 - 12 metri (strada Dafinului - etapa finala)



Extras PUG - situatia drumurilor

Specialist RUR:	arh. Georgeta Trimbitas	Denumire proiect:	EXTINDERE ZONĂ REZIDENȚIALĂ ȘI SERVICII	Nr. pr.:	177/2019
	Proiectant: S.C. ARHITECT TRÎMBIȚAȘ S.R.L. Timișoara, tel. +4-0744698012 tel./fax: +4 (0256) 432212		CF 407390, Giroc, județ Timiș	Faza:	P.U.Z.
		Beneficiar:	SC ROMED SRL Mediaș		
Sef proiect:	arh. Georgeta Trîmbițaș	Scara:		Denumire planșa:	Profile stradale
Proiectat:	arh. Tiron Andrei				
Desenat:	arh. Tiron Andrei				
Verificat:	arh. Alina Narita	Data: 14/12/2021	Nr. pl.:		177 A 03.